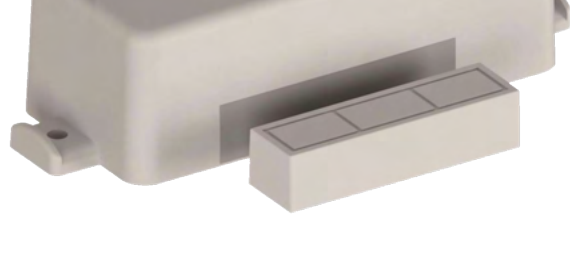


MAG SENSOR

A cloud connected magnetic sensor that can be used to detect the presence or absence of a nearby magnet. It can send alerts if it detects a status change.

The Mag Sensor can detect the presence or absence of a nearby magnet which in turn can be used to detect the opening or closing of doors, gates and cabinets for security applications. It is compatible with most security alarm magnets and can be installed effortlessly. It will send a notification via SMS and/or Email to alert the user of a status change.



PRODUCT FEATURES

- Compatible with most burglar alarm magnets
- Can be used with stronger magnets for longer ranges.
- Easy installation
- Generate configurable automated notifications.
- Water and dust resistant (IP68)
- Battery life up to 10 years

IDEAL FOR

- Alerting if a door, gate or window has been opened.
- Can be used in industrial applications to detect status change via a stronger magnet.

REGISTRATION AND LOGIN

1. CREATE YOUR ACCOUNT

Create a user profile with your personal contact details on app.bridgiot.co.za



2. PLACE YOUR ORDER

Place your order [here](#) for the Mag Sensor.

3. LINK YOUR DEVICE

Link your device on the BridgiOT web-application.

- Select "ADD DEVICE"
- Enter your own reference name and device-specific ID (do not include the zeros at the start of the device ID), found at the bottom of the water monitor.
- See page 3 for detailed instructions

4. ACCESS YOUR DEVICE

Once steps 1 & 3 have been completed successfully, the device should now be visible on the app.bridgiot.co.za page, under "My Devices". Please see Page 3 for more details.

CREATE AN ACCOUNT

Email Address

Password

LOG IN

Forgot Password? Don't have an account? [Sign up](#)

1 To create an account, go to app.bridgiot.co.za. You will be presented with a login page. Click on the "Sign up" link.

2 You will be redirected to the sign up page. Here you can fill in your account details.

A verification email will be sent to the email entered here. Click on the resend verification email button if you have not received the email. Make sure to check your spam or junk email folder.

Click on the link to verify your account. You will now be able to log in using your email and password that you've setup.

NB: The contact details you enter here will be used to deliver automated alarms, notifications, reports and billing communication for primary users.

First Name

Last Name

Email Address

Phone Number

Password

Confirm Password

REGISTER

LINK YOUR DEVICE

To link a device, log into your account via the app.bridgiot.co.za web app.

If this is a new account, you will be greeted with a message informing you that you have no devices connected. Click on the "Add Device +" button.



If you would like to add another device onto your account, navigate to the top right of the page and click on Add Device.

When adding your device, you will have to enter your device name and device ID or serial number.

Your device name is how you will identify it in your list of devices. Thus give it a name that would allow you to know exactly what device you're looking at. E.g. "Front Door" or "Guest House Door".

The Device ID is located on the device on the information label. It is labeled as "DEV ID" followed by an eight digit code.

DEV ID must be entered without the preceding "0". For example if the DEV ID is given as: 01FC549B then add the device using: 1FC549B

Add New Device

Device Name (optional)

Device IMEI, Serial No. Or ID

ADD DEVICE

CANCEL

Adding users to a device

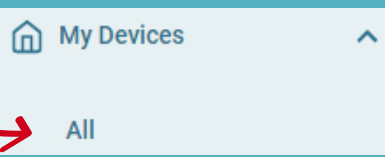
If you'd like other users to be able to log in and manage your device, you would need to add them as a user on each device they require access to.

To add someone as a user to your device(s), they must first create a user account if they are a new user.

Non-primary users cannot manage devices and settings*

1 GO TO "MY DEVICES"

In the menu on the left of the page, click on "My Devices" → "All". You will see a list of all your connected devices. Click on the device you would like to add a user to.



2 NAVIGATE TO SETTINGS

At the top right of your screen you'll see a cog button. That is the settings for the device you have selected. Click on that.



3 NAVIGATE TO USERS

When viewing your settings page you will see the users button at the top of the page. Once you've clicked on users you will see a list of all the users that is currently connected to the device. Click on "Add User" above this list.



4 ENTER USER DETAILS

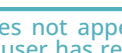
Once you have clicked on the "Add User" button, you will see a space to enter the user's email address. Enter the full email address of the user you would like to add. You will then see the user name and appear below that bar. This is to confirm that the user is already registered on our database.

Add User

Search users:

Example User (example@user.com)

Click on the "Add" button on the right once you have confirmed this.



If the user's name does not appear below the search bar, double check that the user has registered on our system by creating their own account.

DEVICE APP USE

You can check your device's status by navigating to "My Devices". Click on the Mag Sensor in your device list.

This is the dashboard view of your device. You will be presented with a summary of your device. Whether it is connected, when last it has transmitted data to the web app, the status of your subscription, the battery level of your device and the status of the sensor (Closed or Open).

Dashboard

Device Status

Connectivity **ONLINE**

Last Seen **8 Feb 2022 11:56:58 SAST**

State **-**

Subscription **-**

Battery **81.67% (2.94V)**

Last Status **CLOSED**

Last Event **5 Feb 2022 18:02:22**

At **SAST**

In this dashboard view you can access your device's settings by clicking on the settings cog.

Settings

Config

Users

Device Name
 Mag Sensor

Notifications

ALL

EMAIL

SMS

DEVICE TECHNICAL INFORMATION

PHYSICAL PROPERTIES

Mass	200g
Enclosure	Length: 113 - Width 40 mm Height 33 mm

TECHNICAL SPECIFICATIONS

Make	RTS
Model	Icemicter - Magnetic Alert
Estimated Battery Life	Expected Life 3-10 Years (Dependent reporting period and environmental conditions)
Temperature Range	-30°C to +60 °C
Accreditation	• Sigfox (Class 0) • ICASA • CE • IP 68

Please feel free to contact us for more information:



Phone

Tel: 021 201 6939
 Cell / Whatsapp:
 083 339 1298



Address

Time Square Building
 12 Elektron Road
 Techno Park
 Stellenbosch
 7600



Email

info@bridgiot.co.za
sales@bridgiot.co.za
support@bridgiot.co.za

WEBSITE

